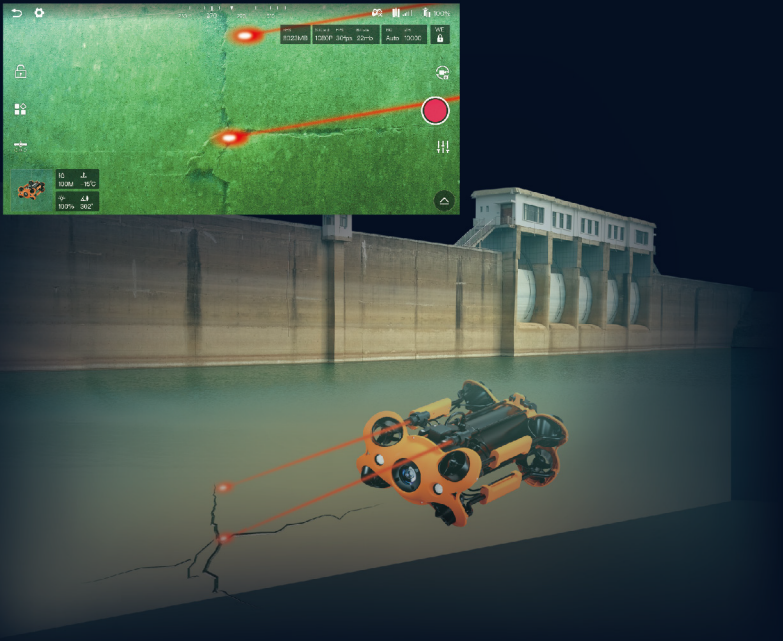
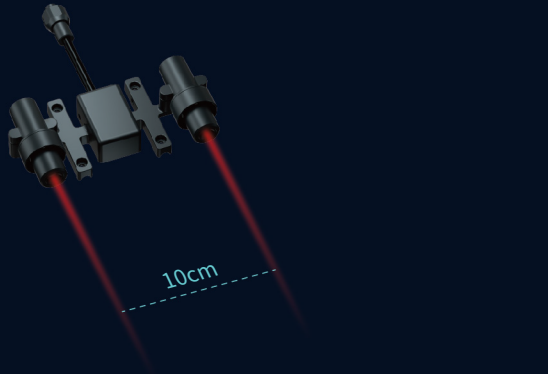


CHASING Laser Scaler

| For CHASING M2 and CHASING M2 PRO

It features a user-friendly 10cm pitch red laser beam and is primarily used for calculating the length of cracks in boats, dams, etc. Widely used in aquaculture, dam inspection, and boat repair.

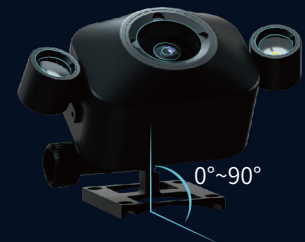


CHASING Auxiliary Camera

| For CHASING M2 PRO

• Used with CHASING GO1 App, it allows users to engage in real-time viewing and shooting via their mobile device, and supports both photography and video functions.

• It features a 1080p F/1.6 aperture and 2*1200 lumens fill light; it uses a 1/2.9 inch CMOS depth sensor and 2 megapixels. It can be used at the same time as the ROV's camera to provide a second angle for the ROV.



CHASING Fixed-range Sonar

| For CHASING M2 and CHASING M2 PRO

• It is a multi-beam ultrasonic ranging sensor that utilizes the ultrasonic ranging principle. Ultrasonic ranging has excellent receiving sensitivity and high measurement accuracy.

• Sonar ranging can be performed in four directions: front, left, right, and downward of ROV. This enables the underwater collision prevention and underwater ranging function.



Specifications

CHASING Ac Power Supply

Ac Power Supply Module	
Size	118 × 148.5mm
Weight	≈1200g
In-out	Input Ac 200-240V Output Dc 25.2V 10A
Power	250W

Ac Power Supply Cable	
Lenthlength	100/200m
Wire Diameter	6.5mm
Core Wire	Silver-coated Copper 27awg × 2 + 25awg × 2

CHASING Laser Scaler

Size	132 × 70 × 36.5mm
Weight	About 200g
Beam Exit Diameter	5mm
Laser Spacing	10 ± 0.5cm
Laser Color	Red

CHASING Auxiliary Camera

Size	173 × 71 × 108mm
Weight	536g
Resolution	2 mp
Fill Light	1200lm × 2
Sensor	1/2.9 Inch
Image Formats	jpg/mp4

CHASING Grabber Claw 2.0

Grabber Claw	
Weight	446g
Size	380 × 35 × 35mm
Operating Temperature	-5°C-35°C
Water Resistance	100m

Two-jaw Clamp	
Maximum Opening	170mm
Maximum Grip	7kg
Weight	76g
Size	125 × 53 × 22mm

Sediment Sampler	
Maximum Opening	170mm
Maximum Grip	7kg
Weight	325g
Size	178 × 120 × 85mm

Pull Ring	
Maximum Opening	170mm
Maximum Grip	7kg
Weight	98g
Size	113 × 71 × 22mm

CHASING Adapter Box

Adapter Box	
Size	340 × 282 × 133mm
Weight	3.3 Kg

Network	
Port	rj45 × 1
Usbl	Usbl × 1
Ac Input	Ac Output × 1
Ac Input Voltage Range	Ac200-240v
Ac Output	Ac Input × 1

Battery	
Endurance Time	≈5 h
Battery	4800 mah
Charging Time	2 h

CHASING Fixed-range Sonar

Range	0.25m ~ 5m
Blind Spot	25cm
Measurement Accuracy	±25mm
Resolution	1mm
Responding Speed	50ms
Emission Angle	13° ± 2°
Power Supply	10.8VDC ~ 26.4VDC
Ambient Temperature	-20°C ~ 60°C
Protection Level	Ip68
Mounting Bracket (Default) size	64 × 64.8 × 79mm
Mounting Bracket(Optional) size	64 × 64.8 × 153mm
Mounting Bracket (Default) weight	54g
Mounting Bracket (Optional) weight	108g

CHASING Underwater Led Video Light

dimensions (mm)	Led Light Head Diameter: 70.2
	Led Light Body Diameter: 64.8
	Overall Length: 139
Lens Specifications	6 mm (Tempered Glass)
Weight	776 Grams (Inc Battery)
Weight In Water	363 Grams (Inc Battery))
Light Source	1 * Warm White Fill Light Cree Cob Led
Color Temperature	5000k-5500k
Color Rendering Index	95
Lumen	12000 Lumens
Beam Angle	110° Photography Fill Light
Working Voltage	25.2-16.8V
Working Temp	-10°C-45°C
Depth Rating	100m

Model	Rechargeable Lithium
	Ion Battery Pack
Capacity	3500 mAh

CHASING Control Console

Control Console	
Size	484 × 375 × 178mm
Weight	11 Kg
Operating Temp	-10°C-45°C

Interface	
Interface	Rj45 × 2
	Usb 2.0 Host × 2
	Qc 3.0 Usb × 1
Ac Input	200 V ~ 240 V
Ac Output	220 V

Screen	
Size	13.3 Inch
Resolution	1920 × 1080
Display Brightness	1000 Cd/m²

Battery	
Runtime	8h
Battery	226.8Wh
Charge Time	3a Charger: 4.5h

CHASING BLUEPRINT OCULUS Sonar Kit

Size	125 × 122 × 122mm
Weight	980g
Resistance	300m
Structure	Anodised Aluminium Or Titanium

CHASING Docking Station

Size	120 × 157mm
Weight	≈1050g(in the air)
Power Supply	Output:16V
Interface	UART × 3, RJ45 × 2

Industrial-grade Intelligent Underwater System

Multiple Accessories · Multi-scenario Application



CHASING m2 PRO

Industrial-grade Underwater Rov For Professional And Enterprise Customers.

CHASING

www.chasing.com
sales@chasing-innovation.com

CHASING AC POWER SUPPLY

| For CHASING M2 and CHASING M2 PRO

• Paired with the CHASING high-brightness screen control console or CHASING adapter box, the ROV supports various power supply via AC current or battery, allowing extended operating time.

• CHASING AC Direct Power Supply System outputs power at 250W. Its reel is equipped with a pull rod and scroll wheel that are easy to use and convenient to assemble and disassemble.

• 100 and 200 meter cables provide long-distance power supply.

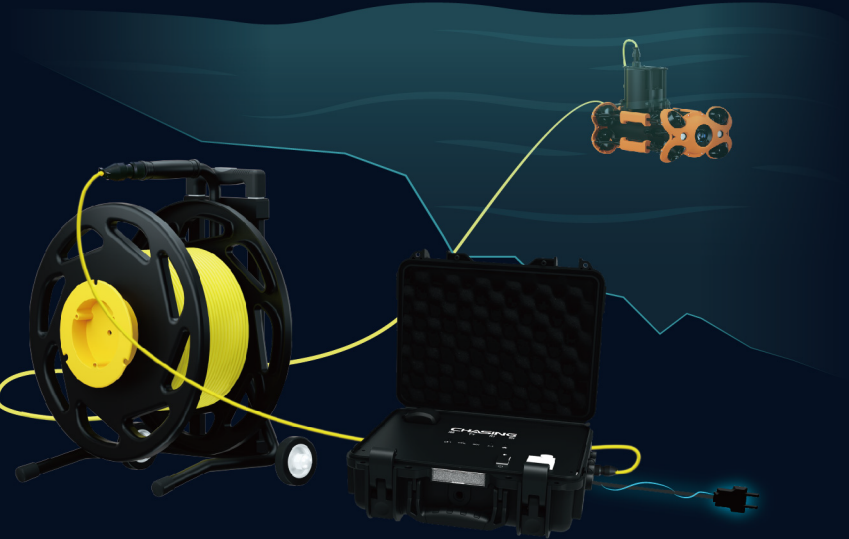


CHASING Adapter Box

| For CHASING M2 and CHASING M2 PRO

• It can be used with the CHASING AC Direct Power Supply System or USBL equipment to enable ROV underwater extended operation time and positioning functions.

• Small size offers increased portability,5 hours of battery life .



CHASING Control Console

| For CHASING M2 PRO

• It's a professional control platform designed for high-end professional users. The Aluminum-alloy shell is strong and durable. The built-in 13.3-inch 1080P display delivers real-time ROV underwater images, which are clearly visible in even direct sunlight.

• The ergonomic control platform, with a number of well-designed switches, buttons and interfaces, makes it can control ROV and USV simultaneously, as well as AC direct power supply, USBL, manipulator arm, image sonar, external lights and other professional accessories.

• Four brackets can be set separately to adapt to various terrains. With rollers at the bottom, it can be easily carried like a suitcase after folding. It can work anywhere easily.



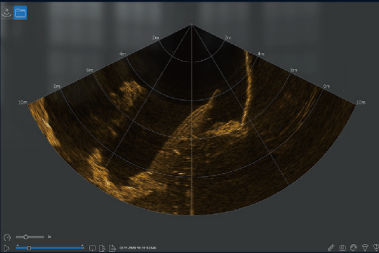
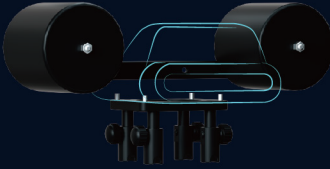
CHASING BLUEPRINT OCULUS Sonar Kit

| For CHASING M2 PRO

• The kit is exclusively designed for easier loading of imaging sonar equipment. The product is equipped with two standard buoyancy modules to provide effective buoyancy for the sonar.

• The double-headed connection cable can transmit data to the mobile phone in real time.

• The mounting bracket is used for the mounting of the imaging sonar, and the 30-degree mounting bracket is used for multiple accessories mounting.



CHASING Grabber Claw 2.0

| For CHASING M2 and CHASING M2 PRO

• The product is equipped with three types of replaceable tool heads: two-jaw clamp, sediment sampler, and pull ring. This is suitable for underwater clamping, dragging, sampling as well as many other task operations.

• A simple and convenient replacement tool with an intelligent control system brings more help in underwater unknown area exploration.



CHASING Docking Station

| For CHASING M2 PRO

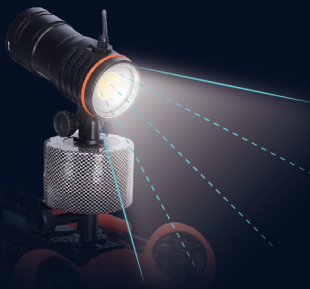
It features a total of 5 expanding ports which can be used to expand advanced components such as the AC power supply system, auxiliary cameras, laser scalars, Multibeam Image Sonar, USBL positioning systems, and floodlights, enabling multiple accessories to be used at the same time. The modularized design is simple and portable, and installation is convenient and precise.



CHASING Underwater Led Video Light

| For CHASING M2 and CHASING M2 PRO

It's specifically designed for better quality underwater photography and video-recording. The waterproof submersible fill light with high color rendering index warm white LED dramatically improve the appearance of objects and illuminate their true colors, and it offers a brightness of up to 12,000 lumens. The battery life indicator displays the correct remaining battery power.



Underwater Observation



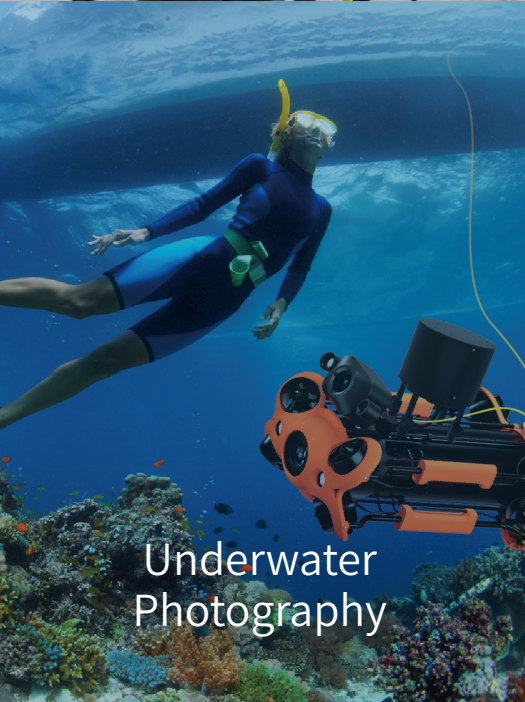
Police Rescue



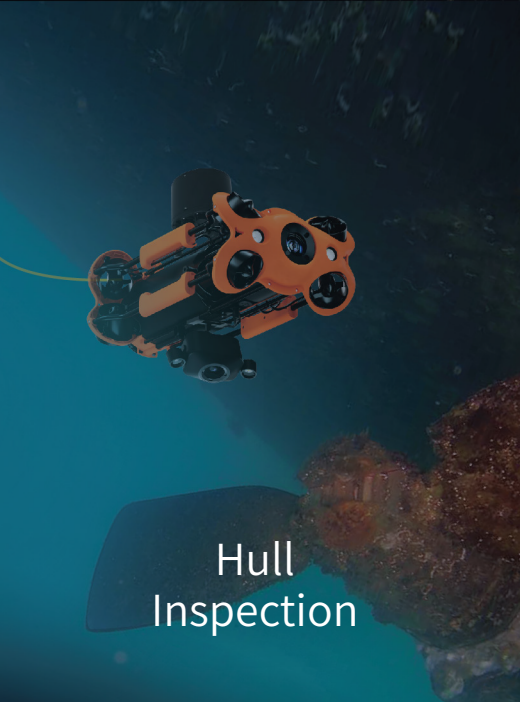
Aquaculture & Commercial Fishing



Security & Rescue



Underwater Photography



Hull Inspection



Scientific Research Exploration



Environmental Protection & Inspection



Water Conservancy & Hydropower